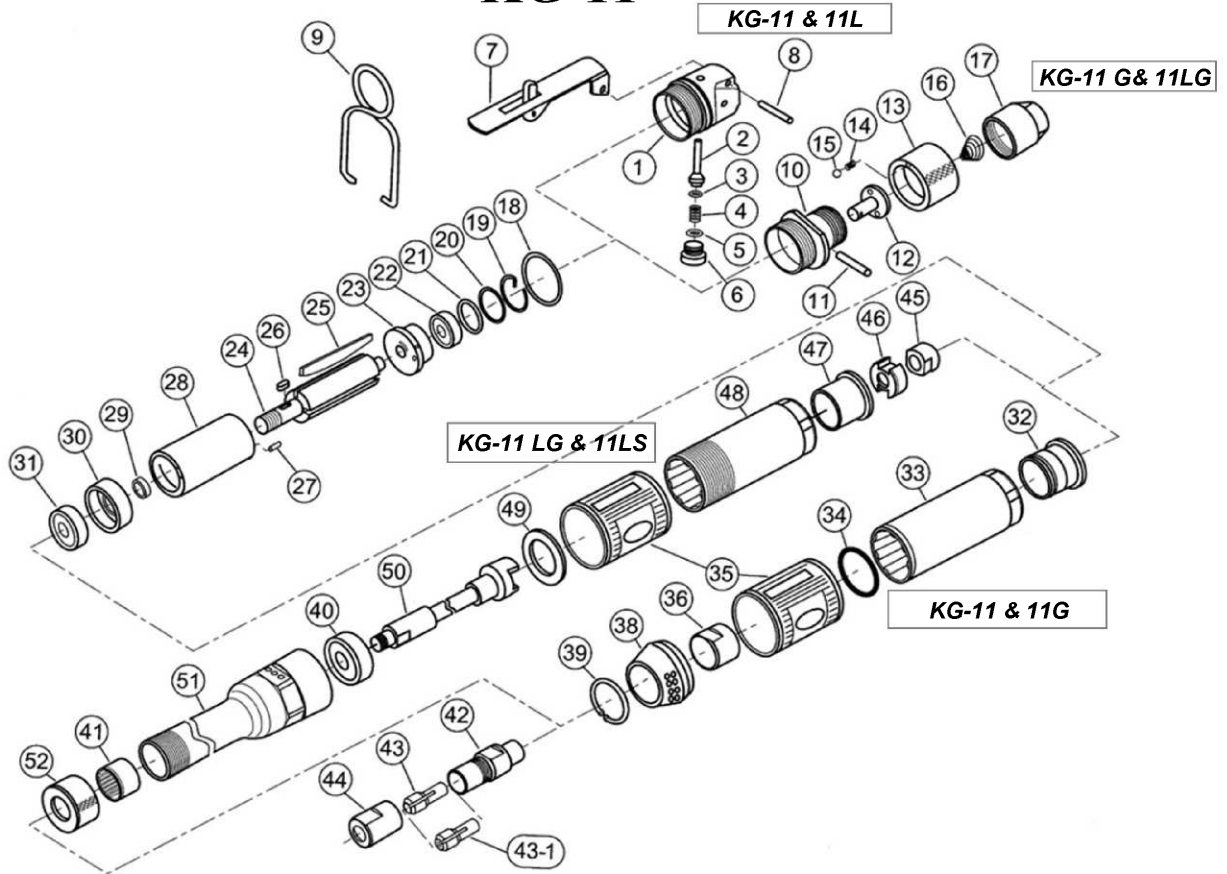


EXPLODED VIEW

**KG-11**

REF.NO.	PART NO.	PART NAME	Q'TY	REF.NO.	PART NO.	PART NAME	Q'TY
1	3201102	INLET CASE	1	28	3201120	CYLINDER	1
2	3201113	THROTTLE VALVE PIN	1	29	3201125	SPACER	1
3	Z040P3	O-RING	1	30	3201123	REAR END PLATE	1
4	3201190	THROTTLE VALVE SPRING	1	31	Z001608ZZ	BALL BEARING	1
5	Z040P6	O-RING	1	32	3201110	BUSHING	1
6	3201114	THROTTLE VALVE SUPPORTER	1	33	3201101	MOTOR CASE	1
7	3201112S	SAFETY LEVER	1	34	32011101	O-RING	1
8	Z0563X22	SPRING PIN	1	35	32011011	GRIP COVER	1
9	3201152	HUNGER	1		32011012	GRIP COVER (SAFETY LEVER)	1
10	3201129	JOINT	1	36	32011301	SHAFT RECEIVER	2
11	Z0573X24	ROLLER	1	38	3201108	EXHAUST BUSHING	1
12	3201106	ROTARY VALVE	1	39	Z03422	RETAINER RING	1
13	3201109	ROTARY SWITCH	1	40	Z0016001ZZ	BALL BEARING	1
14	3201191	KNOCK SPRING	1	41	3201162L	NEEDLE BEARING	1
15	Z0101/8D	STEEL BALL	1	42	3201130	COLLET SHAFT	1
16	3201107	SPRING	1	43	3201160	COLLET 6mm	1
17	3201115	INLET BUSHING	1	43-1	32011601	COLLET 3mm	1
18	Z041S26	O-RING	1	44	3201161	COLLET NUT	1
19	3201140	RETAINER RING	1	45	32011301L	DRIVE JOINT	1
20	3201141	WASHER	1	46	3201131L	DRIVE BUSH	1
21	Z041S16	O-RING	1	47	3201110L	BUSHING L	1
22	Z001626ZZ	BALL BEARING	1	48	3201101L	MOTOR CASE L	1
23	3201124	FRONT END PLATE	1	49	3201129L	BEARING STOPPER	1
24	3201121	ROTOR	1	50	32011302L	SHAFT	1
25	3201122	ROTOR BLADE	4	51	3201108L	EXHAUST BUSHING L	1
26	32011211	KEY	1	52	3201163L	LOCK NUT	1
27	Z05615X6	SPRING PIN	1				

**KUKEN CO., LTD.**

3-6-15 Nonoue, Habikino-shi, Osaka 583-0871, Japan

Tel : +81-72-953-3346 Fax : +81-72-953-0605

October 25, 2010