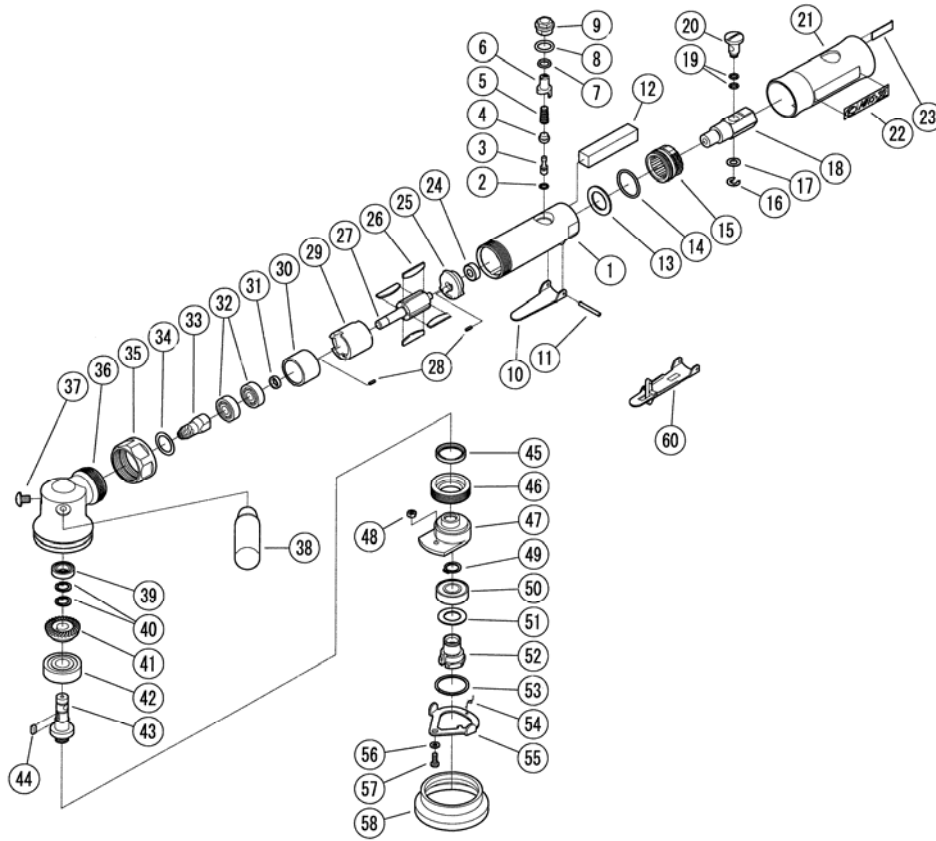


## MRS-35



REF.NO.	PART NO.	PART NAME	Q'TY	REF.NO.	PART NO.	PART NAME	Q'TY
1	2203581	MOTOR CASE C.P.	1	31	22035211	BEARING SPACER	1
(1)	2203581S	MOTOR CASE C.P. W/SAFETY	1	32	Z001608ZZ	BALL BEARING	2
2	22035132	O-RING	1	33	2203567A	PINION GEAR	1
3	2203513	THROTTLE VALVE PIN	1	34	2203539	SPACER	1
4	22035131	THROTTLE VALVE	1	35	2203547	LOCK NUT	1
5	2203590	THROTTLE SPRING	1	36	2203560	ANGLE HOUSING	1
6	2203517	REGULATING VALVE	1	37	Z0886×8J	SCREW	2
7	Z040P8	O-RING	1	38	2203502	HANDLE	1
8	Z040P12	O-RING	1	39	Z0016201ZZ	BALL BEARING	1
9	2203514	VALVE SCREW	1	40	Z03410	RETAINER	2
10	2203512	THROTTLE LEVER	1	41	2203562A	BEVEL GEAR	1
(10)	2203588S	THROTTLE LEVER W/SAFETY	1	42	Z0016800ZZ	BALL BEARING	1
11	Z0563×24	SPRING PIN	1	43	2203564	SHAFT	1
12	2203540	MUFFLER	1	44	Z0503308	PARALLEL KEY	1
13	2203557	SILENT PLATE	1	45	Z01920264	OIL SEAL	1
14	22035133	O-RING	1	46	2203548	HOLDER	1
15	2203508	EXHAUST SLEEVE	1	47	2203528	BALANCE WEIGHT	1
16	Z0335	RETAINER	1	48	Z09041	NUT	1
17	22035181	VALVE WASHER	1	49	Z03212	RETAINER	1
18	2203511	INLET BUSHING	1	50	Z0016001D	BALL BEARING	1
19	Z041S7	O-RING	2	51	22301305	WASHER	1
20	2203518	REGULATOR KNOB	1	52	2230133	PAD SCREW	1
21	22035011	PROTECTOR	1	53	Z03828	RETAINER RING	1
22	2203595	NAME LABEL	1	54	2230142	LOCK SPRING	1
23	22035951	MODEL PLATE	1	55	2230146	LOCK PLATE	1
24	Z001696ZZ	BALL BEARING	1	56	Z1014K	WASHER	1
25	2203524	REAR END PLATE	1	57	Z0844×10	SCREW	1
26	2203522	ROTOR BLADE	4	58	22035036	GUARD COVER	1
27	2203521	ROTOR	1	×	2203587	REGULATOR C.P.	1
28	Z0562×6	SPRING PIN	2	●	2203585	BALANCE WEIGHT C.P.	1
29	2203520	CYLINDER	1				
30	2203523	FRONT END PLATE	1				



**KUKEN CO., LTD.**

3-6-15 Nonoue, Habikino-shi, Osaka 583-0871, Japan

Tel : +81-72-953-3346 Fax : +81-72-953-0605

2010/12/06